

Up to 95% AFUE, Single Stage, ECM Gas Furnace

EASIER TO SELL

- Up to 96% AFUE in upflow and horizontal positions up to 95% AFUE in downflow position
- Fixed-Speeds, Constant Torque ECM blower motor
- Supports single-stage cooling units
- Insulated heat exchanger compartment
- Approved for Twinning application (0601714 through 1002120) with accessory (order separately)
- Approved for Manufactured Housing/Mobile Home applications (0401410 through 1202422) with accessory (order separately)
- Low NOx units are designed for California installations and meet 40 ng/J NOx emissions. Can be installed in air quality management districts with a 40 ng/J NOx emissions requirement.
- Cabinet air leakage less than 2.0% at 1.0 in. W.C. and cabinet air leakage less than 1.4% at 0.5 in. W.C. when tested in accordance with ASHRAE standard 193



Illustrations and photographs are only representative. Some product models may vary.

TOUGHER

- Flame roll-out sensors standard
- Adjustable heating blower OFF delay
- Factory set blower ON delay
- Stainless steel secondary heat exchanger
- High temperature limit control prevents overheating
- Direct ignition with Silicon Nitride ignitor
- High quality, corrosion-resistant, prepainted steel cabinet

EASIER TO INSTALL AND SERVICE

- Direct vent (2-pipe), single-pipe venting or ventilated combustion air
- 24 VAC humidifier terminal
- Electronic air cleaner terminal
- 35" (889mm) high, for ease of installation
- Quarter turn knobs for easy door removal and secure attachment
- Factory shipped for natural gas, with propane gas conversion kits available
- Four position – upflow/downflow/horizontal (left/right) installation
- At least twelve different venting configurations
- Through the casing flue pipe for counterflow or horizontal applications with accessory (order separately)
- Concentric vent available
- Self diagnostics with super bright LED
- Slide out heat exchanger and blower assembly

LIMITED WARRANTY *

- Lifetime heat exchanger limited warranty with timely registration
- 5 year parts limited warranty
 - With timely registration, an additional 5 year parts limited warranty

* For residential applications only. See warranty certificate for complete details and restrictions, including warranty coverage for other applications.

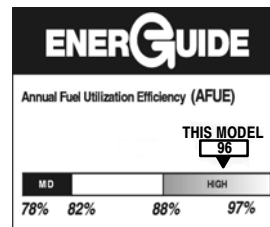
⚠ WARNING

CARBON MONOXIDE POISONING AND FIRE HAZARD

Failure to follow this warning could result in personal injury, death, and/or property damage.

This furnace is not designed for use in recreation vehicles or outdoors. This furnace is designed for use in manufactured (Mobile) homes when an optional Mobile Home accessory kit is installed.

Failure to follow this warning could result in personal injury, death, and/or property damage.



ISO 9001
Quality



Use of the AHRI Certified TM Mark indicates a manufacturer's participation in the program. For verification of certification for individual products, go to www.ahridirectory.org.

| Model Number | Input (BTUH) | AFUE (up to) | | ENERGY STAR® | Cooling Capacity CFM range @ .5 in. w.c. (125 Pa) | Dimensions H x W x D Inches (Millimeters) | Shipping Wt. Lbs (Kg) |
|----------------|--------------|-------------------|----------|--------------|---|---|-----------------------|
| | | UPFLOW/HORIZONTAL | DOWNFLOW | | | | |
| N95ESN0261410A | 26,000 | 96.0% | 95.0% | ✓ | 235-895 | 35 x 14-3/16 x 29-1/2 (889 x 361 x 750) | 118.0 (53.5) |
| N95ESN0401410A | 40,000 | 96.0% | 95.0% | ✓ | 365-950 | 35 x 14-3/16 x 29-1/2 (889 x 361 x 750) | 120.0 (54.4) |
| N95ESN0401712A | 40,000 | 96.0% | 95.0% | ✓ | 270-1010 | 35 x 17-1/2 x 29-1/2 (889 x 445 x 750) | 126.5 (57.4) |
| N95ESN0601412A | 60,000 | 95.0% | 95.0% | ✓ | 345-1120 | 35 x 14-3/16 x 29-1/2 (889 x 361 x 750) | 129.0 (58.5) |
| N95ESN0601714A | 60,000 | 96.0% | 95.0% | ✓ | 460-1330 | 35 x 17-1/2 x 29-1/2 (889 x 445 x 750) | 138.5 (62.8) |
| N95ESN0801716A | 80,000 | 96.0% | 95.0% | ✓ | 935-1665 | 35 x 17-1/2 x 29-1/2 (889 x 445 x 750) | 146.5 (66.5) |
| N95ESN0802120A | 80,000 | 96.0% | 95.0% | ✓ | 895-1855 | 35 x 21 x 29-1/2 (889 x 533 x 750) | 154.5 (70.1) |
| N95ESN1002120A | 100,000 | 96.0% | 95.0% | ✓ | 1110-2125 | 35 x 21 x 29-1/2 (889 x 533 x 750) | 164.5 (74.6) |
| N95ESN1202422A | 120,000 | 96.0% | 95.0% | ✓ | 710-2105 | 35 x 24-1/2 x 29-1/2 (889 x 622 x 750) | 179.5 (81.4) |
| N95ESN1402422A | 140,000 | 95.0% | 95.0% | ✓ | 470-2310 | 35 x 24-1/2 x 29-1/2 (889 x 622 x 750) | 189.0 (85.7) |

PHYSICAL DATA

| Heating Capacity and Efficiency | | 0261410 | 0401410 | 0401712 | 0601412 | 0601714 | 0801716 | 0802120 | 1002120 | 1202422 | 1402422 |
|--|------------------|-------------------|-------------------|-------------------|-------------------|-------------------|-------------------|-------------------|-------------------|-------------------|-------------------|
| Input | High Heat (BTUH) | 26,000 | 40,000 | 40,000 | 60,000 | 60,000 | 80,000 | 80,000 | 100,000 | 120,000 | 140,000 |
| Output | High Heat (BTUH) | 25,000 | 39,000 | 39,000 | 58,000 | 58,000 | 78,000 | 78,000 | 97,000 | 117,000 | 135,000 |
| Certified Temperature Rise Range °F (°C) | High Heat | 25 - 55 (14 - 31) | 40 - 70 (22 - 39) | 40 - 70 (22 - 39) | 45 - 75 (25 - 42) | 40 - 70 (22 - 39) | 40 - 70 (22 - 39) | 40 - 70 (22 - 39) | 40 - 70 (22 - 39) | 40 - 70 (22 - 39) | 45 - 75 (25 - 42) |

Airflow Capacity and Blower Data

| | | | | | | | | | | | |
|---|---------------------------------------|------------|------------|------------|------------|------------|------------|------------|------------|------------|------------|
| Rated External Static Pressure (in. w.c.) | Heating | 0.10 | 0.10 | 0.10 | 0.12 | 0.12 | 0.12 | 0.12 | 0.15 | 0.20 | 0.20 |
| | Cooling | 0.50 | 0.50 | 0.50 | 0.50 | 0.50 | 0.50 | 0.50 | 0.50 | 0.50 | 0.50 |
| Airflow Delivery @ Rated ESP (CFM) | High Heat | 605 | 695 | 650 | 930 | 1010 | 1325 | 1330 | 1730 | 2020 | 2130 |
| | Cooling | 895 | 950 | 1010 | 1120 | 1330 | 1665 | 1855 | 2125 | 2105 | 2310 |
| Cooling Capacity (tons)@ 400, 350 CFM/ton | CFM/ton | 2 | 2 | 2.50 | 2.50 | 3.50 | 4 | 5 | 5 | 5 | 5 |
| | CFM/ton | 2.50 | 2.50 | 3 | 3 | 4 | 4.50 | 5.50 | 6 | 6 | 6 |
| Direct-Drive Motor Type | Electronically Commutated Motor (ECM) | | | | | | | | | | |
| Direct-Drive Motor HP | | 1/3 | 1/2 | 1/2 | 1/2 | 3/4 | 3/4 | 1 | 1 | 1 | 1 |
| Motor Full Load Amps | | 4.4 | 6.3 | 6.8 | 6.3 | 8.8 | 9.2 | 11.5 | 11.7 | 11.5 | 11.7 |
| RPM Range | | 400 - 1200 | 600 - 2000 | 400 - 1200 | 600 - 2000 | 400 - 1200 | 400 - 1200 | 400 - 1200 | 400 - 1200 | 400 - 1200 | 400 - 1200 |
| Speed Selections | | 5 | 5 | 5 | 5 | 5 | 5 | 5 | 5 | 5 | 5 |
| Blower Wheel Dia x Width | in. | 11 x 7 | 11 x 7 | 11 x 8 | 11 x 7 | 11 x 8 | 11 x 8 | 11 x 10 | 11 x 10 | 11 x 11 | 11 x 11 |
| Air Filtration System | Field Supplied Filter | | | | | | | | | | |
| Filter Used for Certified Watt Data | NAHA00*06FB | | | | | | | | | | |

Electrical Data

| | | | | | | | | | | | |
|--|-------------------|----------|--------|--------|--------|-------|-------|--------|--------|--------|--------|
| Input Voltage | Volts-Hertz-Phase | 115-60-1 | | | | | | | | | |
| Operating Voltage Range | Min-Max | 104-127 | | | | | | | | | |
| Maximum Input Amps | Amps | 5.1 | 7.0 | 7.5 | 7.1 | 9.6 | 10 | 12.3 | 12.6 | 12.4 | 12.6 |
| Unit Ampacity | Amps | 7.3 | 9.7 | 10.3 | 9.8 | 12.9 | 13.4 | 16.3 | 16.7 | 16.4 | 16.7 |
| Minimum Wire Size | AWG | 14 | 14 | 14 | 14 | 14 | 14 | 12 | 12 | 12 | 12 |
| Maximum Wire Length@ Minimum Wire Size | Feet | 50 | 38 | 36 | 38 | 28 | 27 | 35 | 34 | 35 | 34 |
| | (M) | (15.5) | (11.7) | (10.9) | (11.5) | (8.7) | (8.4) | (10.7) | (10.5) | (10.7) | (10.5) |
| Maximum Fuse/Ckt Bkr (Time-Delay Type Recommended) | Amps | 15 | 15 | 15 | 15 | 15 | 15 | 20 | 20 | 20 | 20 |
| Transformer Capacity (24vac output) | | 40 VA | | | | | | | | | |
| External Control Power Available | Heating | 27.9 VA | | | | | | | | | |
| | Cooling | 34.6 VA | | | | | | | | | |

Controls

| | | | | | | | | | | | |
|--|---|---------------|---|---|---|---|---|---|---|---|--|
| Gas Connection Size | 1/2" - NPT | | | | | | | | | | |
| Burners (Monoport) | 2 | 2 | 2 | 3 | 3 | 4 | 4 | 5 | 6 | 7 | |
| Gas Valve (Redundant) | Manufacturer | White Rodgers | | | | | | | | | |
| Minimum Inlet Gas pressure (in. wc) | 4.50 | | | | | | | | | | |
| Maximum Inlet Gas pressure (in. wc) | 13.60 | | | | | | | | | | |
| Manufactured (Mobile) Home Kit | See Accessory Listing | | | | | | | | | | |
| Ignition Device | Silicon Nitride | | | | | | | | | | |
| Heating Blower Control (Heating Off-Delay) | Adjustable: 90, 120, 150, 180 seconds | | | | | | | | | | |
| Cooling Blower Control (Time Delay Relay) | 90 seconds | | | | | | | | | | |
| Communication System | none | | | | | | | | | | |
| Thermostat Connections | Com 24V, R, W, G, Y | | | | | | | | | | |
| Accessory Connections | EAC (115vac); HUM (24vac); 1-stg AC (via Y) | | | | | | | | | | |

MINIMUM CLEARANCES TO COMBUSTIBLE MATERIALS FOR ALL UNITS

| POSITION | CLEARANCE In(mm) |
|---|-------------------------|
| REAR | 0 |
| FRONT (Combustion air openings in furnace and in structure) | 1 (25) |
| Required for service | *24 (610) |
| All Sides of Supply Plenum | *1 (25) |
| Sides | 0 |
| Vent | 0 |
| Top of Furnace | 1 (25) |

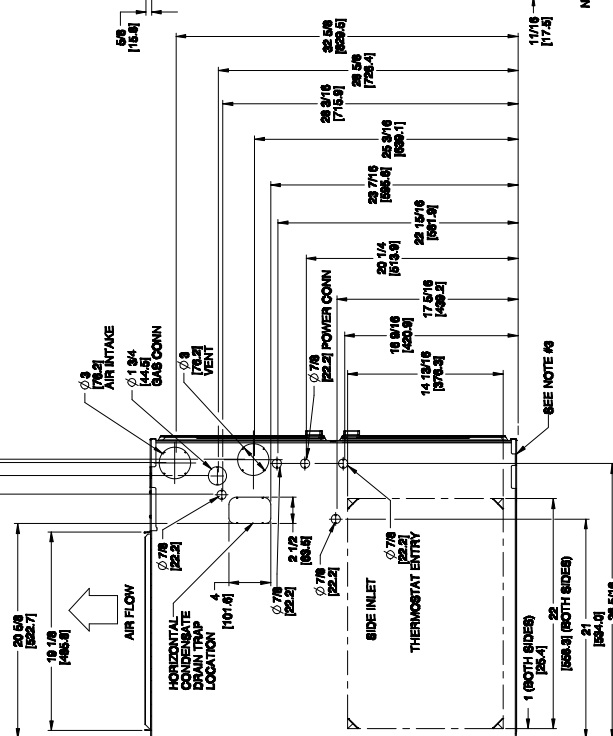
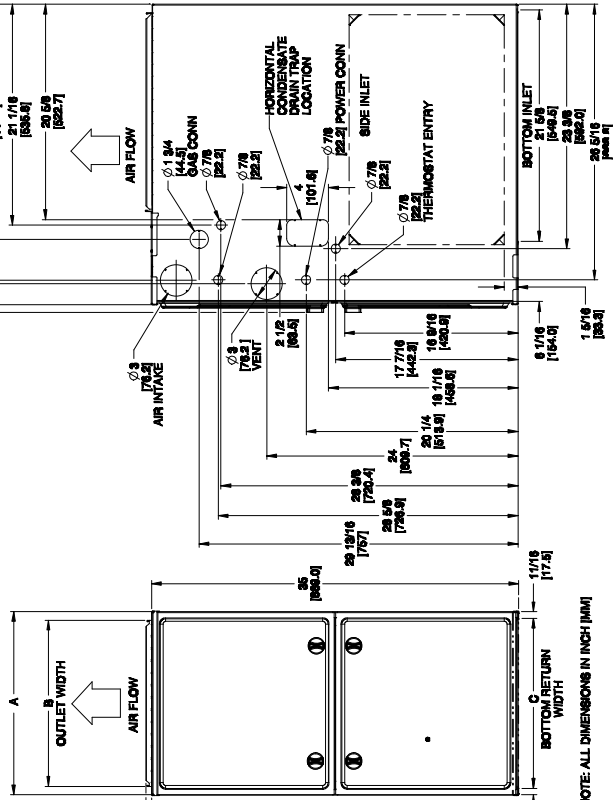
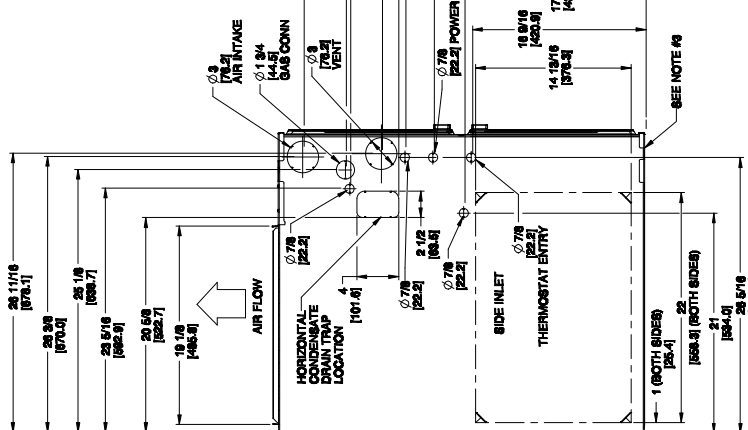
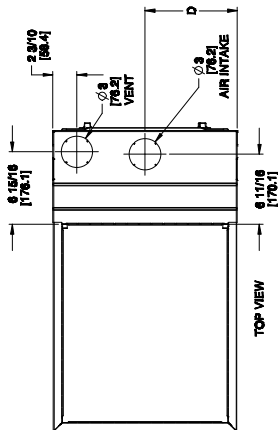
* Consult your local building codes.

| FURNACE SIZE | A | B | C | D | SHIP WT. LB (KG) |
|---------------------|--------------------------|-------------------------|-------------------------------|-------------------|-----------------------------|
| | CABINET WIDTH | OUTLET WIDTH | BOTTOM INLET WIDTH | AIR INTAKE | |
| 0261410 | 14-3/16 (361) | 12-1/2 (319) | 12-9/16 (322) | 7-1/8 (181) | 118.5 (53.7) |
| 0401410 | 14-3/16 (361) | 12-1/2 (319) | 12-9/16 (322) | 7-1/8 (181) | 120 (54.4) |
| 0401712 | 17-1/2 (445) | 15-7/8 (403) | 16 (406) | 8-3/4 (222) | 126.5 (57.4) |
| 0601412 | 14-3/16 (361) | 12-1/2 (319) | 12-9/16 (322) | 7-1/8 (181) | 129 (58.5) |
| 0601714 | 17-1/2 (445) | 15-7/8 (403) | 16 (406) | 8-3/4 (222) | 138.5 (62.8) |
| 0801716 | 17-1/2 (445) | 15-7/8 (403) | 16 (406) | 8-3/4 (222) | 146.5 (66.4) |
| 0802120 | 21 (533) | 19-3/8 (492) | 19-1/2 (495) | 10-1/2 (267) | 154.5 (70.1) |
| 1002120 | 21 (533) | 19-3/8 (492) | 19-1/2 (495) | 10-1/2 (267) | 164.5 (74.6) |
| 1202422 | 24-1/2 (622) | 22-7/8 (581) | 23 (584) | 12-1/4 (311) | 179.5 (81.4) |
| 1402422 | 24-1/2 (622) | 22-7/8 (581) | 23 (584) | 12-1/4 (311) | 189 (85.7) |

UNIT DIMENSIONS

NOTES:

1. Doors may vary by model.
2. Minimum return-air openings at furnace, based on metal duct. If flex duct is used, see flex duct manufacturer's recommendations for equivalent diameters.
 - a. For 800 CFM-16-in. (406 mm) round or 14 1/2 x 12-in. (368 x 305 mm) rectangle.
 - b. For 1200 CFM-20-in. (508 mm) round or 14 1/2 x 19 1/2-in. (368 x 495 mm) rectangle.
 - c. For 1600 CFM-22-in. (559 mm) round or 14 1/2 x 22 1/16-in. (368 x 560mm) rectangle.
3. Return air above 1800 CFM at 0.5 in. w.c. ESP on 24.5" casing, requires one of the following configurations: 2 sides, 1 side and a bottom or bottom only. See Air Delivery table in this document for specific use to allow for sufficient airflow to the furnace.
3. Vent and Combustion air pipes through blower compartment must use accessory "Vent Kit - Through the Cabinet". See accessory list for current part number.



A180203

| AIR DELIVERY – CFM (with filter) | | | | | | | | | | | | |
|----------------------------------|-----------------|---------------------------------------|------------------------------------|------|------|------|------|------|------|------|------|------|
| UNIT SIZE | WIRE LEAD COLOR | SPEED TAPS ^{2, 3} (Function) | EXTERNAL STATIC PRESSURE (IN.W.C.) | | | | | | | | | |
| | | | 0.1 | 0.2 | 0.3 | 0.4 | 0.5 | 0.6 | 0.7 | 0.8 | 0.9 | 1.0 |
| 0261410 | Black | Cooling. Do not use for heating. | 1045 | 1010 | 975 | 935 | 895 | 855 | 810 | 760 | 715 | 670 |
| | Yellow | Alt Cooling or alt Heating | 820 | 770 | 730 | 680 | 630 | 585 | 530 | 480 | 435 | 385 |
| | Orange | Alt Cooling or alt Heating | 655 | 600 | 550 | 495 | 435 | 385 | 335 | 265 | – | – |
| | Blue | Heating or alt Cooling | 605 | 545 | 490 | 435 | 375 | 335 | 255 | – | – | – |
| | Red | Alt Cooling. Do not use for heating. | 480 | 415 | 360 | 305 | 235 | – | – | – | – | – |
| 0401410 | Gray | Cooling. Do not use for heating. | 1050 | 1025 | 1000 | 975 | 950 | 920 | 895 | 870 | 845 | 820 |
| | Yellow | Alt Cooling. Do not use for heating. | 920 | 890 | 860 | 830 | 805 | 775 | 745 | 715 | 690 | 660 |
| | Orange | Alt Cooling or alt Heating | 735 | 700 | 665 | 630 | 595 | 555 | 525 | 490 | 450 | 415 |
| | Blue | Heating or alt Cooling | 695 | 660 | 625 | 590 | 555 | 515 | 480 | 445 | 405 | 370 |
| | Red | Alt Cooling. Do not use for heating. | 540 | 495 | 455 | 410 | 365 | 320 | 280 | 235 | – | – |
| 0401712 | Gray | Cooling. Do not use for heating. | 1180 | 1140 | 1100 | 1055 | 1010 | 960 | 915 | 860 | 805 | 735 |
| | Yellow | Alt Cooling. Do not use for heating. | 880 | 845 | 810 | 780 | 745 | 710 | 675 | 640 | 600 | 570 |
| | Blue | Heating or alt Cooling | 650 | 610 | 560 | 515 | 470 | 435 | 395 | 360 | 325 | 265 |
| | Orange | Alt Cooling. Do not use for heating. | 525 | 460 | 405 | 350 | 320 | 275 | 210 | – | – | – |
| | Red | Alt Cooling. Do not use for heating. | 515 | 420 | 350 | 310 | 270 | 205 | – | – | – | – |
| 0601412 | Gray | Cooling. Do not use for heating. | 1225 | 1200 | 1175 | 1145 | 1120 | 1095 | 1065 | 1040 | 1015 | 990 |
| | Yellow | Alt Cooling. Do not use for heating. | 1105 | 1080 | 1050 | 1020 | 990 | 965 | 935 | 905 | 880 | 850 |
| | Blue | Heating or alt Cooling | 940 | 910 | 875 | 845 | 810 | 775 | 745 | 710 | 680 | 645 |
| | Orange | Alt Cooling or alt Heating | 725 | 690 | 650 | 610 | 570 | 530 | 490 | 445 | 405 | 365 |
| | Red | Alt Cooling. Do not use for heating. | 545 | 495 | 445 | 395 | 345 | 295 | 245 | – | – | – |
| 0601714 | Gray | Cooling. Do not use for heating. | 1475 | 1445 | 1405 | 1370 | 1330 | 1290 | 1255 | 1215 | 1175 | 1140 |
| | Yellow | Alt Cooling or alt Heating | 1230 | 1190 | 1155 | 1120 | 1085 | 1050 | 1005 | 970 | 925 | 885 |
| | Orange | Alt Cooling or alt Heating | 1070 | 1030 | 990 | 950 | 920 | 875 | 840 | 800 | 755 | 715 |
| | Blue | Heating or alt Cooling | 1020 | 975 | 940 | 900 | 860 | 820 | 775 | 740 | 690 | 650 |
| | Red | Alt Cooling. Do not use for heating. | 700 | 590 | 535 | 485 | 460 | 390 | 340 | 300 | 275 | 210 |
| 0801716 | Gray | Cooling. Do not use for heating. | 1820 | 1790 | 1755 | 1710 | 1665 | 1620 | 1570 | 1525 | 1480 | 1435 |
| | Yellow | Alt Cooling or alt Heating | 1455 | 1420 | 1380 | 1345 | 1310 | 1275 | 1240 | 1205 | 1170 | 1135 |
| | Blue | Heating or alt Cooling | 1335 | 1295 | 1260 | 1220 | 1185 | 1150 | 1110 | 1075 | 1040 | 1005 |
| | Orange | Alt Cooling or alt Heating | 1110 | 1065 | 1020 | 980 | 935 | 895 | 850 | 810 | 770 | 725 |
| | Red | Alt Cooling. Do not use for heating. | 425 | 335 | 240 | – | – | – | – | – | – | – |
| 0802120 | Gray | Cooling. Do not use for heating. | 2045 | 1995 | 1950 | 1900 | 1855 | 1805 | 1760 | 1710 | 1660 | 1615 |
| | Yellow | Alt Cooling. Do not use for heating. | 1665 | 1625 | 1575 | 1530 | 1480 | 1435 | 1385 | 1340 | 1285 | 1240 |
| | Orange | Alt Cooling or alt Heating | 1475 | 1420 | 1370 | 1320 | 1270 | 1220 | 1170 | 1125 | 1070 | 1025 |
| | Blue | Heating or alt Cooling | 1345 | 1290 | 1235 | 1180 | 1130 | 1080 | 1025 | 975 | 935 | 885 |
| | Red | Alt Cooling. Do not use for heating. | 1155 | 1080 | 1015 | 960 | 895 | 845 | 790 | 735 | 675 | 620 |
| 1002120 | Gray | Cooling. Do not use for heating. | 2280 | 2240 | 2200 | 2165 | 2125 | 2085 | 2020 | 1910 | 1795 | 1665 |
| | Yellow | Alt Cooling. Do not use for heating. | 1860 | 1815 | 1775 | 1730 | 1690 | 1645 | 1605 | 1560 | 1515 | 1465 |
| | Blue | Heating or alt Cooling | 1755 | 1710 | 1665 | 1620 | 1580 | 1535 | 1485 | 1440 | 1390 | 1340 |
| | Orange | Alt Cooling or alt Heating | 1530 | 1480 | 1425 | 1380 | 1325 | 1275 | 1215 | 1160 | 1110 | 1060 |
| | Red | Cooling. Do not use for heating. | 1340 | 1285 | 1230 | 1170 | 1110 | 1050 | 990 | 930 | 875 | 820 |
| 1202422 | Gray | Cooling. Do not use for heating. | 2310 | 2255 | 2205 | 2155 | 2105 | 2055 | 2005 | 1955 | 1910 | 1885 |
| | Blue | Heating or alt Cooling | 2065 | 2020 | 1970 | 1915 | 1860 | 1805 | 1740 | 1690 | 1635 | 1580 |
| | Yellow | Alt Cooling or alt Heating | 1850 | 1800 | 1745 | 1690 | 1640 | 1585 | 1530 | 1475 | 1420 | 1360 |
| | Orange | Alt Cooling. Do not use for heating. | 1500 | 1440 | 1380 | 1320 | 1260 | 1205 | 1145 | 1085 | 1035 | 955 |
| | Red | Alt Cooling. Do not use for heating. | 1070 | 960 | 875 | 805 | 710 | 630 | 560 | 490 | 420 | 355 |
| 1402422 | Gray | Cooling. Do not use for heating. | 2505 | 2465 | 2425 | 2370 | 2310 | 2250 | 2180 | 2090 | 1955 | 1810 |
| | Blue | Heating or alt Cooling | 2180 | 2130 | 2085 | 2035 | 1990 | 1945 | 1900 | 1850 | 1800 | 1755 |
| | Yellow | Alt Cooling or alt Heating | 1910 | 1855 | 1810 | 1760 | 1705 | 1655 | 1605 | 1555 | 1505 | 1460 |
| | Orange | Alt Cooling. Do not use for heating. | 1560 | 1505 | 1445 | 1380 | 1325 | 1265 | 1210 | 1155 | 1100 | 1040 |
| | Red | Alt Cooling. Do not use for heating. | 855 | 760 | 665 | 565 | 470 | 385 | 305 | – | – | – |

NOTE:

1. A filter is required for each return—air inlet. Airflow performance includes a 3/4–in. (19 mm) washable filter media such as contained in a factory—authorized accessory filter rack. See accessory list. To determine airflow performance without this filter, assume an additional 0.1 in. w.c. available external static pressure.
2. **ADJUST THE BLOWER SPEED TAPS AS NECESSARY FOR THE PROPER AIR TEMPERATURE RISE FOR EACH INSTALLATION.**
3. The “Function” column identifies with speed taps can be used for heating.
4. If the same motor speed tap is needed for heating and cooling, a Jumper Wire accessory kit is available, see Specification Sheet accessories for the current Jumper Wire accessory part number. Reference the “Start—up, Adjustments, and Safety Check” section of installation instructions for further Jumper Wire instructions.
5. Airflows over 1800 CFM require bottom return, two—side return, or bottom and side return. A minimum filter size of 20” x 25” (508 x 635 mm) is required.
6. For upflow applications, air entering from one side into both the side of the furnace and a return air base counts as a side and bottom return.
7. The “–” entry indicates an unstable operating condition.

| ACCESSORIES | | | | | | | |
|---------------|-----------------------------------|--|---------|---------|---------|---------|---------|
| PART NUMBER | COMPONENT NAME | DESCRIPTION | 0261410 | 0401410 | 0401712 | 0601412 | 0601714 |
| NAHB00101CT | EXTERNAL TRAP KIT | CONDENSATE TRAP | X | X | X | X | X |
| NAHA00110DA | DRAIN ACCESSORY | 1/2" CPVC TO 3/4" PVC (10 PACK) | X | X | X | X | X |
| NAHA002CV | VENT TERMINATION KIT | 2" CONCENTRIC VENT | X | X | X | X | X |
| NAHA001CV | | 3" CONCENTRIC VENT | | | | X | X |
| NAHA00101VC | INTERNAL VENT KIT | THROUGH THE CABINET | X | X | X | X | X |
| NAHA00301VT | DIRECT VENT TERMINATION KIT | 2" BRACKET | X | X | X | X | X |
| NAHA00401VT | | 3" BRACKET | | | | X | X |
| NAHA00101CK | INLET AIR PIPE COUPLING | COUPLING FOR POLYPROPYLENE VENT SYSTEMS | X | X | X | X | X |
| NAHA00101HV | HORIZONTAL INSTALLATION KIT | TRAP GROMMET (DIRECT VENT APPLICATION ONLY) | X | X | X | X | X |
| NAHA00101HH | FREEZE PROTECT KIT | CONDENSATE DRAIN LINE - TAPE | X | X | X | X | X |
| NAHA00201HH | CONDENSATE FREEZE PROTECT KIT | CONDENSATE TRAP WITH HEAT PAD | X | X | X | X | X |
| NAHA01101SB | FLOOR BASE KIT | COMBUSTIBLE FLOOR | X | X | X | X | X |
| AGAGC9NPS01A* | GAS CONVERSION KIT | NATURAL TO PROPANE | | X | X | X | X |
| AGAGC9PNS01A* | | PROPANE TO NATURAL | | X | X | X | X |
| AGAGCANPL01A* | GAS CONVERSION KIT (LOW CAPACITY) | NATURAL TO PROPANE | X | | | | |
| AGAGCAPNL01A* | | PROPANE TO NATURAL | X | | | | |
| 1188594‡ | GAS VALVE TOWER PORT ADAPTER KIT | ADAPTER FOR GAS VALVE | X | X | X | X | X |
| NAHC00101MH* | MANUFACTURED HOME KIT | GAS CONVERSION KIT | | X | X | X | X |
| AGABLRJMP10A | BLOWER TAP KIT | BLOWER SPEED TAP JUMPER KIT (10 PIECE) | X | X | X | X | X |
| AGATWNDTE01A | TWINNING KIT | OPERATION OF TWO IDENTICAL SIZE MODEL FURNACES | | | | | X |
| NAHA00506FB† | WASHABLE FILTER PACK | WASHABLE FILTER 1" X 16" X 25" (6 PACK) | X | X | X | X | X |
| NAHA00706FB | | WASHABLE FILTER 1" X 24" X 25" (6 PACK) | | | | | |
| NAHB00501FF | EXTERNAL BOTTOM FILTER RACK | 14" X 25" WASHABLE FILTER INCLUDED | X | X | | X | |
| NAHB00601FF | | 17-1/2" X 25" WASHABLE FILTER INCLUDED | | | X | | X |
| NAHB00101CA | COIL ADAPTER KIT | WITH NO OFFSET | X | X | X | X | X |
| NAHB00201CA | | WITH SINGLE OFFSET | X | X | X | X | X |
| NAHB00301CA | | WITH DOUBLE OFFSET | X | X | X | X | X |
| NAHA01401RA | RETURN AIR KIT | 14-3/16" WIDE | X | X | | X | |
| NAHA01701RA | | 17-1/2" WIDE | | | X | | X |
| NAHA001NK | CONDENSATE NEUTRALIZER KIT | NEUTRALIZES CONDENSATE | X | X | X | X | X |

ACCESSORIES (CONTINUED)

| PART NUMBER | COMPONENT NAME | DESCRIPTION | 0801716 | 0802120 | 1002120 | 1202422 | 1402422 |
|---------------|----------------------------------|--|---------|---------|---------|---------|---------|
| NAHB00101CT | EXTERNAL TRAP KIT | CONDENSATE TRAP | X | X | X | X | X |
| NAHA00110DA | DRAIN ACCESSORY | 1/2" CPVC TO 3/4" PVC (10 PACK) | X | X | X | X | X |
| NAHA002CV | VENT TERMINATION KIT | 2" CONCENTRIC VENT | X | X | X | | |
| NAHA001CV | | 3" CONCENTRIC VENT | X | X | X | X | X |
| NAHA00101VC | INTERNAL VENT KIT | THROUGH THE CABINET | X | X | X | X | X |
| NAHA00301VT | DIRECT VENT TERMINATION KIT | 2" BRACKET | X | X | X | | |
| NAHA00401VT | | 3" BRACKET | X | X | X | X | X |
| NAHA00101CK | INLET AIR PIPE COUPLING | COUPLING FOR POLYPROPYLENE VENT SYSTEMS | X | X | X | X | X |
| NAHA00101HV | HORIZONTAL INSTALLATION KIT | TRAP GROMMET (DIRECT VENT APPLICATION ONLY) | X | X | X | X | X |
| NAHA00101HH | FREEZE PROTECT KIT | CONDENSATE DRAIN LINE – TAPE | X | X | X | X | X |
| NAHA00201HH | CONDENSATE FREEZE PROTECT KIT | CONDENSATE TRAP WITH HEAT PAD | X | X | X | X | X |
| NAHA01101SB | FLOOR BASE KIT | COMBUSTIBLE FLOOR | X | X | X | X | X |
| AGAGC9NPS01A* | GAS CONVERSION KIT | NATURAL TO PROPANE | X | X | X | X | X |
| AGAGC9PNS01A* | | PROPANE TO NATURAL | X | X | X | X | X |
| 1188594‡ | GAS VALVE TOWER PORT ADAPTER KIT | ADAPTER FOR GAS VALVE | X | X | X | X | X |
| NAHC00101MH* | MANUFACTURED HOME KIT | GAS CONVERSION KIT | X | X | X | X | |
| AGABLRJMP10A | BLOWER TAP KIT | BLOWER SPEED TAP JUMPER KIT (10 PIECE) | X | X | X | X | X |
| AGATWNDTE01A | TWINNING KIT | OPERATION OF TWO IDENTICAL SIZE MODEL FURNACES | X | X | X | | |
| NAHA00506FB† | WASHABLE FILTER PACK | WASHABLE FILTER 1" X 16" X 25" (6 PACK) | X | | | | |
| NAHA00706FB | | WASHABLE FILTER 1" X 24" X 25" (6 PACK) | | X | X | X | X |
| NAHB00601FF | EXTERNAL BOTTOM FILTER RACK | 17-1/2" X 25" WASHABLE FILTER INCLUDED | X | | | | |
| NAHB00701FF | | 21" X 25" WASHABLE FILTER INCLUDED | | X | X | | |
| NAHB00801FF | | 24-1/2" X 25" WASHABLE FILTER INCLUDED | | | | X | X |
| NAHB00101CA | COIL ADAPTER KIT | WITH NO OFFSET | X | X | X | X | X |
| NAHB00201CA | | WITH SINGLE OFFSET | X | X | X | X | X |
| NAHB00301CA | | WITH DOUBLE OFFSET | X | X | X | X | X |
| NAHA01701RA | RETURN AIR KIT | 17-1/2" WIDE | X | | | | |
| NAHA02101RA | | 21" WIDE | | X | X | | |
| NAHA02401RA | | 24-1/2" WIDE | | | | X | X |
| NAHA001NK | CONDENSATE NEUTRALIZER KIT | NEUTRALIZES CONDENSATE | X | X | X | X | X |

X Accessory available
 † Suitable for 17 inch external bottom filter rack.
 * Factory authorized and field installed. Gas conversion kits are CSA recognized.
 ‡ Order through FAST Parts.

| Part Number | Gas Type | Orifice Size |
|-------------|----------|--------------|
| 1185612 | Natural | 42 |
| 1176928 | Natural | 43 |
| 1185574 | Natural | 44 |
| 1177213 | Natural | 45 |

| Part Number | Gas Type | Orifice Size |
|-------------|----------|--------------|
| 1183809 | Natural | 46 |
| 1185613 | Natural | 47 |
| 1185614 | Natural | 48 |

| Part Number | Gas Type | Orifice Size |
|-------------|----------|--------------|
| 1184256 | Propane | 54 |
| 1185615 | Propane | 55 |
| 1185616 | Propane | 56 |
| 1185617 | Propane | 1.25 mm |
| 1185618 | Propane | 1.30 mm |